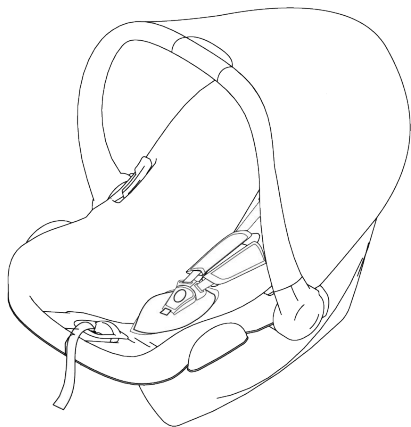


icklebubba

Astral Car Seat



Mass Group

0+

Recommended
Weight

0-13kg

Recommended
Age

**0-12 months
(approx.)**

IMPORTANT - Read the instructions carefully before use and keep for future reference

Contents

● Contents	1
● Safety Warnings	2-3
● Car Seat Features	4
● Opening the Harness	4
● Using the Harness	5-6
● Adjusting the Shoulder Straps	6
● Checking the Child is Correctly Fitted	6
● Installing the Car Seat	7-8
● Installing on to Pram	9-10
● Adjusting the Handle Position	11
● Fitting the Hood	11
● Product Maintenance	12
● Warranty	13

Safety Warnings

WARNING: Read this instruction manual carefully. Study the illustrations in this manual closely before and during installation. Our product is a safety product that is only safe when used according to the instructions given in this manual. To prevent your child from falling out of the seat, always check to make sure the carrying handle is clicked into the carrying position before lifting the seat. Also make sure your child is always strapped in securely with the harness belt.

WARNING: For the future use of the car seat, it is important that you store this instruction manual.

WARNING: Never leave a child unattended in the car seat while in the car or elsewhere.

WARNING: The correct routing of the seat belt is essential for your child's safety. Please see the Installation section. Never thread the belt in any other way. When installing with the seat belt only, use the baby car seat on a front-facing seat that has been approved according to the ECE R16 standard or similar.

WARNING: Never use the baby car seat on a seat equipped with a front airbag, as this can result in the death or injury of the baby. This does not apply to the so called side airbags.

WARNING: Do not leave your baby in the car seat on a raised surface, such as a table, work top, bed, or shopping trolley, due to the risk of falling. Always secure your child with the harness belt, even when the seat is not fitted in the car.

Do not leave your baby in the car seat for a long period of time. It is important for proper motor and muscle development that you place your baby on his stomach or back regularly.

The seat may become unsafe after an accident due to damage that is not immediately noticeable. It should therefore be replaced.

The manufacturer can only guarantee the safety of the seat if it is used by the original owner.

We strongly advise against using a second-hand product, as you can never be sure of its history.

We recommend that car seats are not used for longer than 5 years after the date of purchase. The properties of the product may deteriorate, for example, aging of the plastic (as a result of direct sunlight) and this may not be visible.

Safety Warnings

The moving parts of the baby car seat should not be lubricated in any way. No alterations may be made to the baby car seat, as this could affect part or the overall safety of the seat.

The baby car seat must not be used without its cover. Always use an original cover, as the cover contributes to the safety of the seat.

In order to prevent damage to the cover, do not remove the logos or airbag sticker.

Our baby car seat has been approved according to the most recent guidelines of the ECE R 44/04: the European standard for safety seats. It is suitable for children from birth to approximately 12 months (group 0+: 0 to 13kg).

Always check to make sure the seat fits in your car properly before purchasing it.

The seat must always be secured, even when not in use.

An unsecured seat can injure other passengers in the car in the event of an emergency stop.

If the seat belt height is adjustable, adjust it to the lowest position.

When installing the baby car seat on the passenger seat, position the car seat in the rearmost position. The backrest must be in a fully upright position and the headrest down. When not using the baby car seat, the passenger seat (and headrest) may be adjusted as required.

Prevent damage to the seat by not wedging it between or underneath heavy luggage, adjustable seats or slamming the car door etc.

Make sure that you properly secure all luggage and all other objects likely to cause injury in the event of an accident.

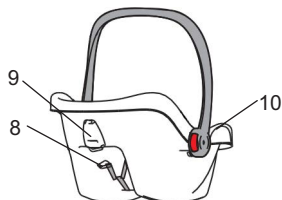
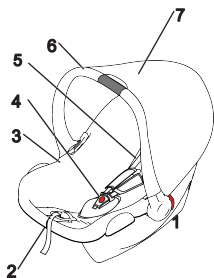
Always cover the seat when the car is parked in the sun as plastic and, metal parts can become very hot and the cover may become discoloured.

Always use a car seat, even for short trips, as this is when most accidents occur.

NEVER hold a baby on your lap while driving. Due to the enormous forces released in an accident, it will be impossible to hold onto the baby.

Never use the same seat belt to secure yourself and the child.

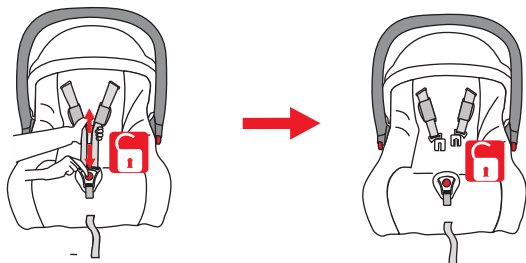
Car Seat Features



1. Button for Adjusting Handle
2. Adjuster Strap
3. Cloth Cover
4. Buckle
5. Shoulder Strap

6. Handle
7. Sunshade/Hood
8. Shoulder Straps Slots
9. Slot for Vehicle Shoulder Strap
10. Slot for Vehicle Lap Strap

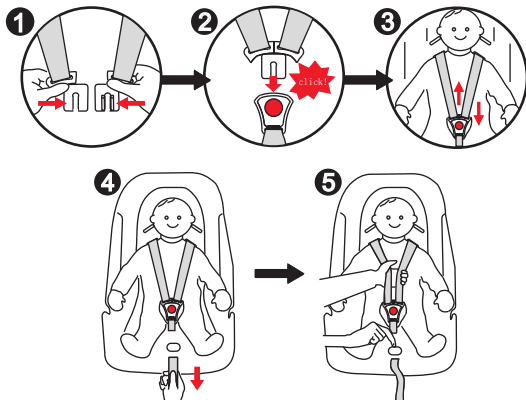
Opening the Harness



1. Open the buckle (press the red button of the buckle);
2. Put the child into the child car seat;
3. The height of shoulder straps should be slightly higher than the child's shoulders (see figures on page 5)

Attention: Ensure that there is no distortion, knots or twists in straps.

Using the Harness



1. Put the two buckle latches together (Figure 1)

2. Put locked latches into the safety buckle, When you hear a "click", it means that the safety buckle has been completely locked (Figure 2)

Attention! When inserting locked latches into buckle, make sure to hear a clear "click" noise

3. Check the harness is correctly locked by pulling the shoulder straps upwards and downwards (Figure 3)

Attention! Shoulder belts should be securely locked with your child, and the lap straps should be as low as possible.

4. Tighten the adjuster strap, while still keeping your child comfortable. Loose straps are dangerous, so check the tightness with every use (Figure 4)

Attention! The max clearance between the shoulder belt and the child's shoulder is around one finger's width.

5. Press the slide-stopper (adjuster button) under the cloth cover and at the same time pull the two shoulder belts upward, so that the shoulder belts can be loosened (Figure 5)

Using the Harness

Releasing the Harness

You can release your child from the car seat by pressing the red button on the buckle. Please make sure that the buckle latches are not catching or hooking the child's clothes.

Adjusting the Shoulder Straps

There are 2 sets of positions for the shoulder straps. The shoulder strap should route through the slot that is slightly higher than the child's shoulder.

To adjust the shoulder strap, first pull it out and then route it through the appropriate slot in the backrest of the child car seat.

The ideal position is demonstrated below:



Checking that the child is properly fitted into the car seat

Please follow these steps to ensure that your child is correctly fitted into the car seat:

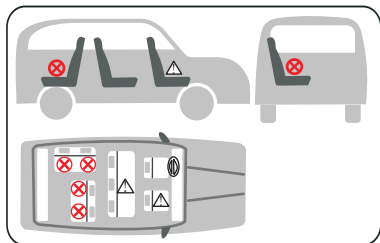
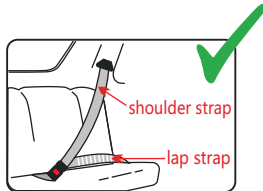
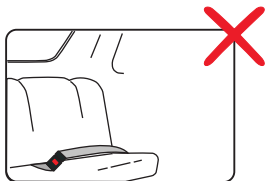
1. The shoulder straps should be tightened to your child's body and not cause any discomfort to your child.
2. The height of the shoulder straps are adjusted correctly.
3. There is no distortion, knots or twists in the belts.
4. The vehicle safety belt should be properly routed through the car seat, with the latch inserted into the buckle of the vehicle.

Installing the Car Seat

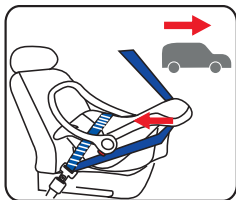
The type of vehicle belt needed:

The child seat can only be installed on the front or back seats equipped with shoulder and lap straps.

This child car seat is only suitable when the vehicle seat is equipped with 3-point safety belts with retractor, approved to GB 14166 or ECE R16.



	The outer seat in back	correct
	Seat in front without airbag	correct
	The middle seat in back equipped with 3-point vehicle belt	correct
	Rearward-facing seat	incorrect
	Side-oriented seat	incorrect

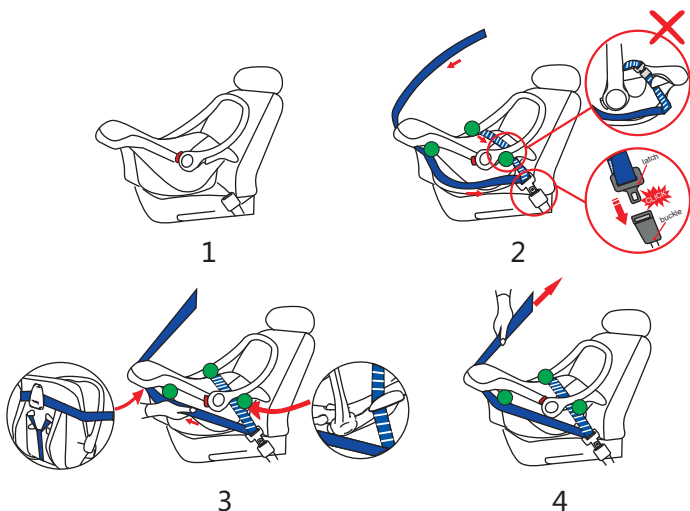


Installing the Car Seat

1. Install the infant car seat rearward-facing on the vehicle seat and ensure that it is close to the backrest of the vehicle seat (Figure 1)
2. Put the lap strap of vehicle belt across the slots in the infant car seat and insert the latch of the vehicle belt into its buckle (Figure 2)

IMPORTANT: Once fitted, the vehicle seat belt and the handle of the infant car seat cannot be located in the position shown in Figure 2. If in doubt, consult the manufacturer.

3. Put the shoulder strap of the vehicle seat belt across the slot in the back of infant car seat, behind the headrest, and tighten it (Figure 3)
4. Ensure that the vehicle seatbelt is tightened and make sure that it is not twisted or knotted. Adjust the handle to the forward placement so that it contacts the backrest of the vehicle seat (Figure 4)



WARNING!

Do not use any other connection points than those marked

Installing on to Pram

Stomp V2 Chassis

Step 1: Adapter Attachment



Step 2: Car Seat Attachment

a. Line up the adapters with each side of the chassis before pushing down on each side. Please be aware that even pressure will need to be placed on both sides at the same time when pushing downwards.



Step 3: To remove the Car Seat, press the red buttons located underneath the car seat fabric firmly at the same time, and lift

Note, the Car Seat Adaptors will remain on the Chassis. Adaptors are to be removed from the chassis once the car seat has been removed, and before attaching the Seat Unit/Carrycot. Please store the adaptors safely after use.



Moon Chassis

Step 1: Adapter Attachment



Step 2: Car Seat Attachment

a. Line up the adapters with each side of the chassis before pushing down on each side. Please be aware that even pressure will need to be placed on both sides at the same time when pushing downwards.



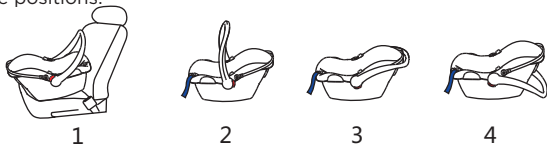
Step 3: To remove the Car Seat, press the circular buttons located on the pram frame, underneath the adapters and lift.
Note, the Car Seat Adaptors will remain in the Car Seat, and can remain attached during use

Step 4: To remove the adapters from the Car Seat, press the red buttons located underneath the car seat fabric firmly and pull the adaptor to release.



Adjusting the Handle Position

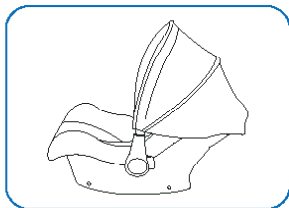
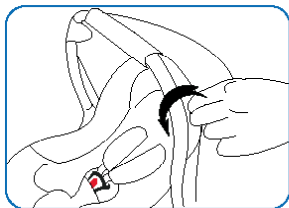
To adjust the position of the handle, press the red buttons on both sides of the handle and adjust it to the position you want. There are 4 possible positions:



1. To be used when installing in the car
2. To be used when carrying the car seat by hand
3. To be used when placing the child in or out of the infant car seat
4. Full recline, to be used when placing the child in or out of the infant car seat

When the handle is adjusted to the desired position, ensure that it is locked in place. When locked, the red button will pop up automatically and you will hear a clear "click" sound.

Fitting the Hood



1. Fasten both zips around the handle, and stretch the elastic edge around the back of the car seat
2. Locate the elastic loop on each side of inner hood and stretch over the plastic notch located near the red handle button.
3. Pull the back of the canopy over the back of the car seat.

General

Remove the car seat from the car before carrying out any maintenance work.

The seat can be cleaned with soap and lukewarm water. Do not use any abrasive detergents.

The belt buckle can be cleaned using warm water.







Do not lubricate.

Removing the cloth cover

The cloth cover of the car seat can be easily removed and washed. To remove, loosen the buckle, and take off the shoulder pads, then rotate the buckle on the back of the car seat shell and pull out the straps so that the cloth cover can be removed.

The cover must be washed by hand (maximum 30° C). Do not use a tumble dryer.

Please follow the items below when washing the cloth cover :

 Please hand wash	 Do not tumble dry
 Layed flat to dry	 Do not iron
 Do not bleach	 Do not dry clean

To refit the cover, carry out the above instructions in reverse order.

Warranty

We guarantee that this product was manufactured in accordance with the current European safety requirements and quality standards applicable to this product, and is free from defects in workmanship and material at the time of purchase. During the production process the product was subjected to various quality checks.

If this product, despite our best efforts, shows a material/manufacturing fault within the warranty period, (with normal use as described in the user instructions) we will comply with the warranty terms and conditions. In this case please **contact your reseller**.

Warranty Term:

The warranty applies for a period of 24 consecutive months from the date the product was purchased. The warranty only applies for the first owner and is not transferable.

Free 4 Year Extended Warranty

To activate your 4 year warranty, register online and keep your proof of purchase for any future claim. If you register within 28 days of purchase we will extend your standard warranty to 4 years from the date of purchase at no extra cost.

THE WARRANTY IS NOT VALID IN THE FOLLOWING CASES:

1. In the case of a use or purpose other than described in the manual.
2. If the product is submitted for repair through a dealer that is not authorised by us.
3. If the product is not supplied to the manufacturer with the original purchase receipt (via the retailer).
4. If repairs were carried out by third parties or a dealer that is not authorised by us.
5. If the defect is the result of improper or careless use or maintenance, negligence or impact damage to the fabric cover and/or frame.
6. If the parts show normal wear and tear that may be expected from daily use of a product (wheels, rotating and moving parts etc.)

If in Doubt

Not all car seats fit all cars. For advice as to the suitability of this restraint for your car, please contact your vehicle manufacturer. We cannot accept responsibility for damage occurring to vehicle seats or seat belts through normal use of this product.